

## Shipboard Preparedness for Emergency Steering in Port Waters

Number: PH 05 / 22 (P)

Date Issued: 16/06/2022

<b>Date of effect:</b>	16/06/2022
<b>Details:</b>	Shipboard Preparedness for Emergency Steering in Port Waters
<b>Former Notice:</b>	Nil
<b>Charts &amp; Publications:</b>	AUS 53
<b>Further Notice:</b>	N/A
<b>Attachment:</b>	N/A

Based on recent events at the Port of Port Hedland, effective 17 June 2022, all vessels calling at Port Hedland are required to have a suitably qualified and competent person on standby in the vessel's steering gear room when the vessel is navigating in port waters as indicated below.

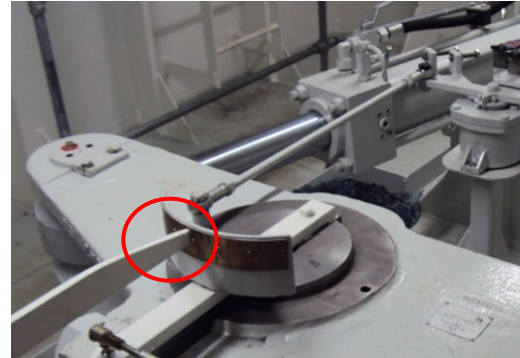
**For inbound vessels:** The standby person must be present in the steering gear room from the time the vessel enters the Port Hedland Shipping Channel, until the vessel is alongside the berth.

**For Outbound vessels:** The standby person must be present in the steering gear room from the time all mooring lines are released, until the vessel has passed beacons 15 / 16 in the Shipping Channel.

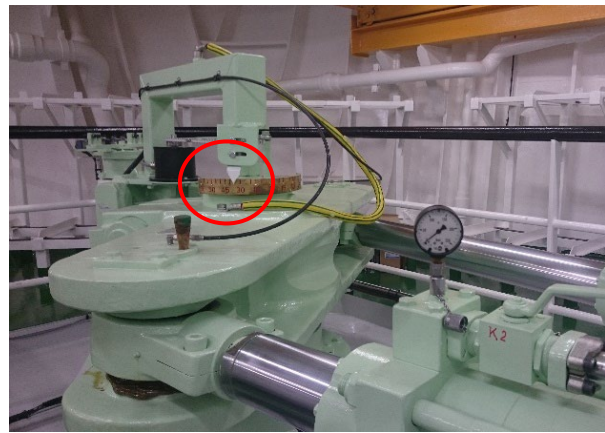
The standby person in the steering gear room should be:

1. Trained in carrying out Emergency Steering and should be provided with a direct means of communication to the vessel's bridge.
2. Able to identify and communicate the actual position of the rudder to the bridge (rudder angle) when requested.
3. Able to change over to local emergency steering mode and steer the vessel as per directions from the vessel's bridge.
4. Only dismissed from steering gear room in consultation with the Pilot.

The vessel's Master must ensure that the standby person in the steering gear room does not operate any machinery unless instructed by the bridge.

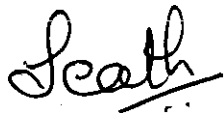


**Actual Position of the Rudder**



**Actual Position of the Rudder**

All queries related to this requirement shall be sent to the PPA Port Hedland Marine Team (PPAshipman@pilbaraports.com.au).



Heathcliff Pimento  
**Harbour Master - Port of Port Hedland**